



# DATASHEET

## EAA-Performance Management

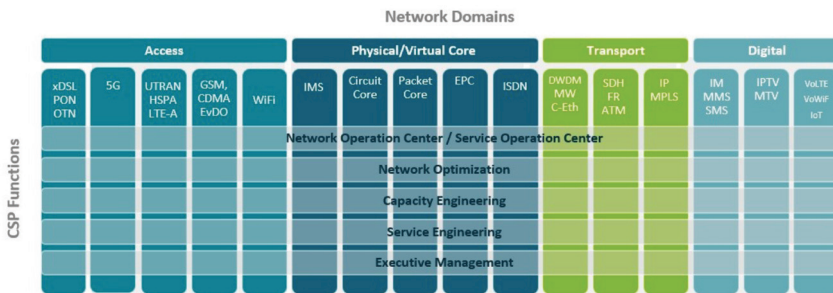
### PrOptima™

As network size, technology complexity and need for operational efficiency increase, the challenge of optimizing network and service performance, and ultimately end user experience, becomes bigger. MYCOM OSI EAA-Performance Management (PrOptima™) makes it simpler and more cost-effective to manage, 'decode' and utilize a growing network data repository, especially in a virtualized, digital service environment. It utilizes AIOps to predict network performance issues and network behaviour trends.

EAA-Performance Management (PrOptima™), part of the EAA suite of products, is an end-to-end converged (mobile/IP/virtualized/fixed) network solution that provides:

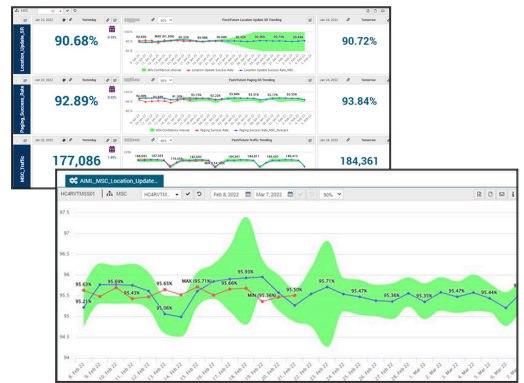
- Leading out-of-the-box support for multiple domains, technologies, network equipment vendors and managed service suppliers
- Scalability to process massive volumes of performance data in near real time
- Advanced flexible reporting and analysis capabilities
- Support for physical, hybrid and telco cloud networks for digital/IoT data traffic
- Open collaborative ecosystem to simplify deployment complexity and cost that includes Northbound HTTP REST APIs and Netflow/IPFIX data ingestion
- Integrated historical event and trend analysis
- User friendly web-based GUI including GIS KPI mapping and ad-hoc report creation

EAA-Performance Management™ addresses the significant challenges that Communications Service Providers (CSPs) face in managing the end-to-end performance of increasingly larger and more complex networks, including networks that span different time zones and/or belong to the same CSP group. With billions of disparate data records created every minute in heterogeneous domains, EAA-Performance Management™ provides a unified performance management platform to store, analyze and act on this valuable information.



From daily troubleshooting and issue resolution to special events management, from spectrum re-farming and new technology/service introduction to network equipment swaps and from RAN sharing to operational migration or transformation, EAA-Performance Management™ helps CSPs optimize network performance and maximize return on network investment in a rapidly changing ecosystem.

“a single view for all vendors and all domains”  
Radio Manager  
Tier-1 European Operator



### BENEFITS

#### Improve Customer Experience

End-to-end visibility across all technologies and domains proactively reduces Mean Time To Resolution

Proactive performance management pre-empts service impacting issues

Powerful root cause analysis reduces issue resolution times

#### Reduce Costs

Cloud native highly scalable proven at 350m subscriber networks with over 100 billion data records processed per hour

Flexible deployment with modular architecture simplifies expansion and upgrading

Single solution for end-to-end physical, hybrid and cloud networks reduces solution count

#### Improve Efficiency

Automates routine tasks and processes enabling teams to focus on customer impacting issue resolution

Empowers users through ease of use flexibility  
Silo collapsing integrated solutions manage complexity and empower users

#### Predictive trends and forecasts

Reduces congestion by identifying complex symptoms of impending congestion

Increases network capacity by forecasting in advance

## KEY FEATURES

### Cloud Native

- Deployable on bare metal, private cloud or public cloud, or any combination
- Reduce deployment and operational costs through DevOps CI/CD processes
- Self orchestrating with High Availability (HA) and flexible performance that can scale as required

### Ingest Telemetry Data

- Ingests Netflow, IPFix and Sflow data
- Analyzes network device, protocol and application data in near real time

### Unified Data

- Single long term data store for big data, enabling secure, end-to-end network and user profile specific access to data of various network domains
- Uses off-the-shelf network equipment interfaces to automatically collect, mediate, aggregate and store data records from multiple domains, technologies and vendors
- Carrier-grade performance with advanced stability, high availability and disaster recovery mechanisms and the ability to scale through federated configurations
- Common integrated network, service and topology database with other MYCOM OSI EAA products collapses the silos between fault, performance and service quality management

### Open Interface

- Near real time, end-to-end network data source for northbound analytics computations using HTTP REST APIs which benefits third party BI and CXA applications (Customer Care applications or Customer Portals) in the CSP ecosystem

### Advanced Reporting

- Correlation of events (alarms) and time-based analysis to provide advanced, simplified root cause analysis
- Detailed (tabular/chart/geographical) reporting that requires no scripting or programming
- Flexible report customization with editing/formatting options, conditional sorting and filtering and advanced features (e.g. highlighting missing data, automatic report re-computation and report reliability indicators)
- Report management options include grouping and synchronization in a single view, repository navigation, scheduled computation/delivery and export in various formats to external systems, including northbound APIs
- Ad-hoc report creation

### Predictive Analysis and RCA

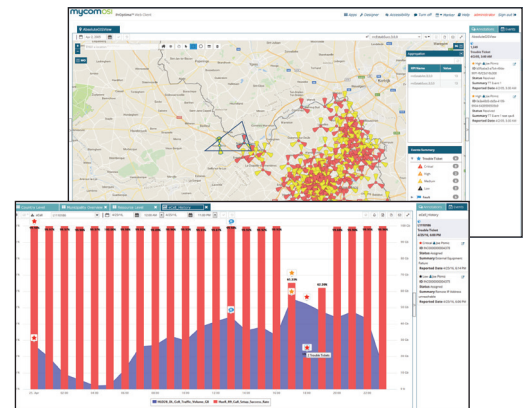
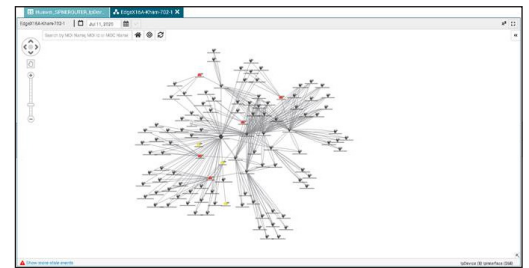
- Advanced statistics, correlation capability, ad hoc drill-down/roll-up, network topology and area navigation and static/adaptive filtering (conditional, threshold-based, etc.)
- Utilizes AIOps for network profiling (to determine abnormal behavior and anomaly detection), planning (to forecast capacity needs) and suggested workflows (to accelerate troubleshooting)
- Predictive root cause analysis techniques to help NOC/SOC teams solve performance problems faster, especially locational understanding of multi-technology RAN performance down to cell level
- IP active testing with unified provisioning, managing and reporting of the performance of IP network elements for core and backhaul networks

### Flexible KPI Utilization

- Simplified KPI editing using an intuitive graphical drag-and-drop editor with access to raw counters, KPIs and formulas, and with the ability for hierarchical drill-down/roll-up, annotation and dashboard design
- Extensive library of mathematical, telecoms, time and logical functions that include multi-vendor/technology KPIs to create complex expressions/formulas

### Ease of Use

- A single one-stop view across data from a variety of sources, linking network performance with service quality and customer experience
- Intuitive topology analyzer, maps, charts, gauges and graphics with near real time/historical data for informed decision making
- Rich web-based GIS for navigating and synchronizing clutter/terrain maps of different RAN (2G to 5G), creating real time GIS views and reducing the time to troubleshoot problems by a ratio of 3:1



“a true multi-vendor tool with a high amount of out-of-the-box KPIs”  
Vodafone

“For PM reporting, the only product that scales up to our magnitude and operations”  
Reliance Jio, India

“SaaS offering is the perfect fit for our performance management strategy”  
Magenta Telekom, Austria

MYCOM OSI is a leading independent provider of Assurance, Automation and Analytics solutions to Tier-1 CSPs including AT&T, Deutsche Telekom, STC, Telefónica, Telenor, T-Mobile, Verizon and Vodafone. Its telecom-centric solutions, which include Performance Management, Fault Management, Service Management, Automation/Orchestration, and Network Analytics create intelligence out of billions of disparate data across vendors, technologies and domains; align network, service and customer teams; empower users with flexibility and autonomy from vendors; deliver efficiency through automation/orchestration capabilities. MYCOM OSI is headquartered in London UK, has 250+ staff worldwide and has been 100% focused on telecom networks for 25+ years.

PrOpt-Q123-V1